



KEEPING YOUR COMMUNITY SAFE

Preparing for Emergencies
and Power Outages in
Your Neighborhood

June 2025

PREPARE FOR EMERGENCY OUTAGES

The heartbreaking windstorm and wildfires this past January are catastrophic examples of the severe weather risks facing Southern California. These events highlight the importance of our wildfire mitigation plans and continuously enhancing the tools we use to maintain infrastructure resiliency.

Your safety is our top priority. The changing climate, below average rainfall this year and extended periods of high winds increase the potential for a fire to spread. When fire weather conditions are present, we may temporarily shut off power for a period of time to reduce the risk of a fire caused by utility equipment. This is known as a Public Safety Power Shutoff (PSPS), and it saves lives. While unlikely to impact your neighborhood, PSPS outages are more frequent in high fire risk areas.

Losing power for any amount of time is hard, frustrating and disruptive. Our mission is to keep the power on when it is safe to do so. To reduce wildfire risks and help you plan for emergencies, we are:

- Installing coated wires and moving power lines underground.
- Collaborating with local agencies to clear more vegetation around our infrastructure to prevent contact with electrical equipment.
- Improving our website for better updates during PSPS events.
- Offering rebates for backup batteries and generators for critical facilities.

This newsletter helps you prepare for possible outages, whether they are caused by severe weather, natural disasters or PSPS. Make a plan, stay safe and be informed.

A handwritten signature in cursive script that reads "Jill C. Anderson".

Jill C. Anderson, SCE Executive Vice President
and Chief Operating Officer

WHAT IS A PUBLIC SAFETY POWER SHUTOFF (PSPS)?

A PSPS is when an electric utility temporarily shuts off power to reduce the risk of a wildfire caused by utility equipment. Dangerous fire weather conditions — which include strong winds, dry vegetation and low humidity — drive PSPS events. Sometimes PSPS lasts over 24 hours. The use of PSPS is more common in high fire risk areas.

Learn more about PSPS and get answers to frequently asked questions at sce.com/psps.



SIGN UP FOR ALERTS

Alerts are available for anyone.

Before a potential PSPS, we'll send notifications via email, text or phone message. We'll keep you informed during the outage and when power has been restored.

Advance notifications may not be possible in unexpected weather conditions.

Sign up for PSPS alerts in English or other available languages at sce.com/pspsalerts.

EMERGENCY RESOURCES

Essential services and resources are available to help you prepare for and navigate outage emergencies.



PREPARING FOR EMERGENCY OUTAGES

- Have an emergency plan to keep your family safe during any outage. That includes a list of the location of emergency items such as water bottles, battery-operated radio, flashlights, first-aid kits, extra blankets and working batteries.
- Refer to our [latest checklist](#) to prepare for outages.
- Bookmark the [outage map](#) or download the MySCE mobile app.



CUSTOMER SUPPORT PROGRAMS

- Find resources and support for customers with access and functional needs, as well as community assistance and emergency preparedness information at sce.com/afn.
- If you or someone in your house relies on electricity for health reasons, you may be eligible for SCE's Medical Baseline Allowance program at sce.com/mba.
- SCE Community Resource Centers and Community Crew Vehicles are located or dispatched within affected communities to provide essential customer service during PSPS events. CRC and CCV locations are listed on the [outage map](#) during PSPS.
- Hotel discounts during prolonged outages can be found at sce.com/hotel-discounts.

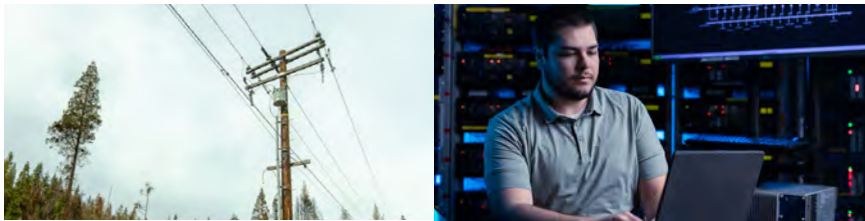
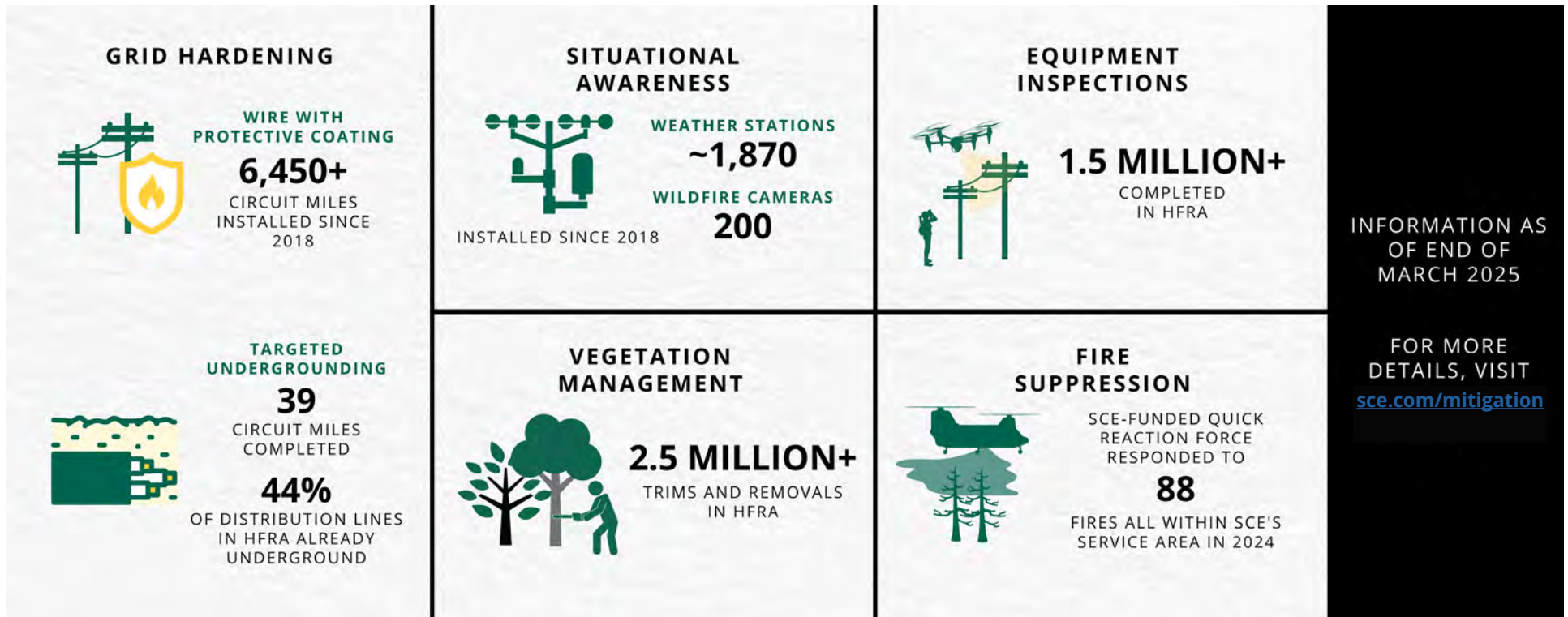


STAY SAFE DURING A POWER OUTAGE

- Never touch or approach a downed power line — stay at least 100 feet away. When safe, call 911 immediately.
- Unplug appliances and electronics to avoid damage or data loss. If you have electric gates or garage doors, learn to operate them manually.
- Gasoline and gas-powered generators should never be used indoors. Generators and batteries should not be connected directly to household circuits without the appropriate safety equipment. Doing either is dangerous for you and repair crews.

REDUCING WILDFIRE RISK

In the last year, we've replaced approximately 800 circuit miles of bare wire with protective coated wires. These coated wires prevent impacts from vegetation blow-ins that could lead to an ignition and reduce interruptions by approximately 70%, making electric service more reliable. By year-end, we expect to reach a major milestone of hardening approximately 90% of our total distribution lines in high fire risk areas.



HOW TECHNOLOGY HELPS US MONITOR WEATHER

Our team of in-house experts uses advanced technology to monitor the weather. We utilize over 1,800 weather stations and 200 wildfire cameras across high fire risk areas to monitor real-time conditions and enhance our weather modeling. We also employ supercomputer technology to run more than 100 million fire simulations nightly and provide critical weather forecasts. This information helps forecast areas and times for possible power shutoffs to prevent a wildfire caused by electric equipment.

CONTINUED WILDFIRE PREVENTION

In 2025, we are continuing wildfire mitigation work, including:

- Installing coated wires, moving power lines underground and exploring new technologies in high fire risk areas. These improvements will make the energy grid more resilient and reliable during high winds and storms.
- Tree trimming and vegetation clearance.
- Conducting detailed structure inspections in high fire risk areas.
- Implementing faster grid protection settings to prevent wildfires during high fire conditions.
- Partnering with local fire agencies for an aerial fire suppression program (known as the Quick Reaction Force).

LEARN MORE
ABOUT PSPS,
NOTIFICATION
PREFERENCES
AND EMERGENCY
PREPAREDNESS
AT [SCE.COM/PSPS](https://sce.com/PSPS).